

2019 ANNUAL REPORT



*Wayne County Board of
Developmental Disabilities*

Wayne County Board of Developmental Disabilities

2019 Highlights

Early Intervention

Early Intervention provides family centered services to children from birth to age three focusing on meeting developmental milestones. Individual based programs are developed with families to meet the needs of each family and their most important goals. The program provides for an Early Intervention Specialist and Physical, Speech and Occupational Therapies to provide coaching to parents to equip them to meet the needs of their children. Currently housed with offices at the Ida Sue School, intervention services are provided in the child's natural environment (home, day care, library) to address concerns as identified by the family and evaluation team. Early Intervention team members are selected based on the family's goals to be primary service and/or secondary providers offering coaching for parents/caregivers during activity based routines. Services are provided year round in cooperation with Help Me Grow.

Pre-School

All aspects of the pre-school program are provided by the Tri-County Educational Service Center, with financial support from the Wayne County Board of Developmental Disabilities.



Ida Sue School

The Ida Sue School, for those students who are ages 6 to 21, is staffed by highly qualified instructors and aides who offer specialized instruction in academics, communication, self-care skills, environmental and community skills, fine arts, physical development, and vocational skills. Specialists work together with the classroom staff to provide appropriate activities for the students in the areas of PT, OT, Speech, and Physical Education. Typical enrollment ranges from 25-32 students. Preparing individuals to successfully enter the world of work while giving them full access to the State of Ohio educational standards are the goals of this program. The program also collaborates with Chippewa Local Schools to provide the opportunity for up to 12 students to attend school with their typical peers.

Community Transition and Support

The Wayne County Board of DD continued and expanded their transition programming, Pre-Employment Transition Services (Pre-ETS). In collaboration with Opportunities with Ohioans with Disabilities, the board provided vocational training and supports to any student who is on an Individual Education Program. Beyond this collaboration the board assisted with system navigation, eligibility and access to community resources. Staff members served as ambassadors in the school districts to answer questions, provide supports and offer education.

- The program served a total of 92 students in the areas of workplace readiness, self-advocacy, post-secondary counseling, job exploration and work-based learning.
- Programming was offered in 100% of the school districts in Wayne County and two school districts in Holmes County. It also offered programming to the Wayne County Board of DD school program and the Holmes County Board of DD school program.

- The summer program partnered with Wooster City Schools and saw students learn and work with 22 local businesses and companies. This year, thanks to WCBDD transportation, the opportunity was able to include many more students into daily work exposures and growth opportunities.
- The Wayne County Board of DD ran a template, trial, version of Project SEARCH at West View Living as well as Wooster Community Hospital. Students from various school districts were given employment opportunities and classroom education to grow vocational outcomes.
- Staff of the department attended over 100 IEP meetings for students 14 to 22. During these meetings transition specialist provided the student and their families resources and information that could assist them in navigating through school and through community providers to create the most positive outcome after the last day of education.

The department continued to maintain a strong presence within local committees such as the local Chambers, Kiwanis, State Support Team 9 and the WCSCC Advisory council.

Adult Services

The Wayne County Board of Developmental Disabilities discontinued direct services to the Adult Day Support and Vocational Habilitation programs at the end of 2014.

Service Coordination

The Service and Support Administration (SSA) department of the Wayne County Board of Developmental Disabilities strives to support each individual and family to achieve a desired quality of life through person-centered planning processes that uphold the wishes, desires and dreams of each individual for their life. The service coordination staff determine eligibility for program services, assist the individual and family to establish goals for life growth, provide advocacy supports, assure freedom of choice of provider services, and protect the health and safety of each individual served.

The Wayne County Board of DD serves over 700 individuals and families affected by developmental disabilities each year with the help and assistance of the Service Coordination Unit, where opportunities for ongoing growth and the fulfillment of life goals are carried forward. The programs actively serving our individuals include early intervention services, school age services, community employment and transition services, and service and support administration and waiver services. The Wayne County Board of DD continues to grow through services and supports to our community and the individuals who live, work and play within it.

Transportation

The Wayne County Board of Developmental Disabilities Transportation Department moved from 1000 West Liberty Street in May of 2019 to 266 Oldman Road in Wooster. Throughout 2019, the Board provided transportation services for student attending Ida Sue School and special needs pre-school classes run by TCESC. Through provider development efforts and the Free Choice of Provider process, the County Board continued to assist adult individuals in finding and selecting alternative transportation providers to meet their mobility needs.

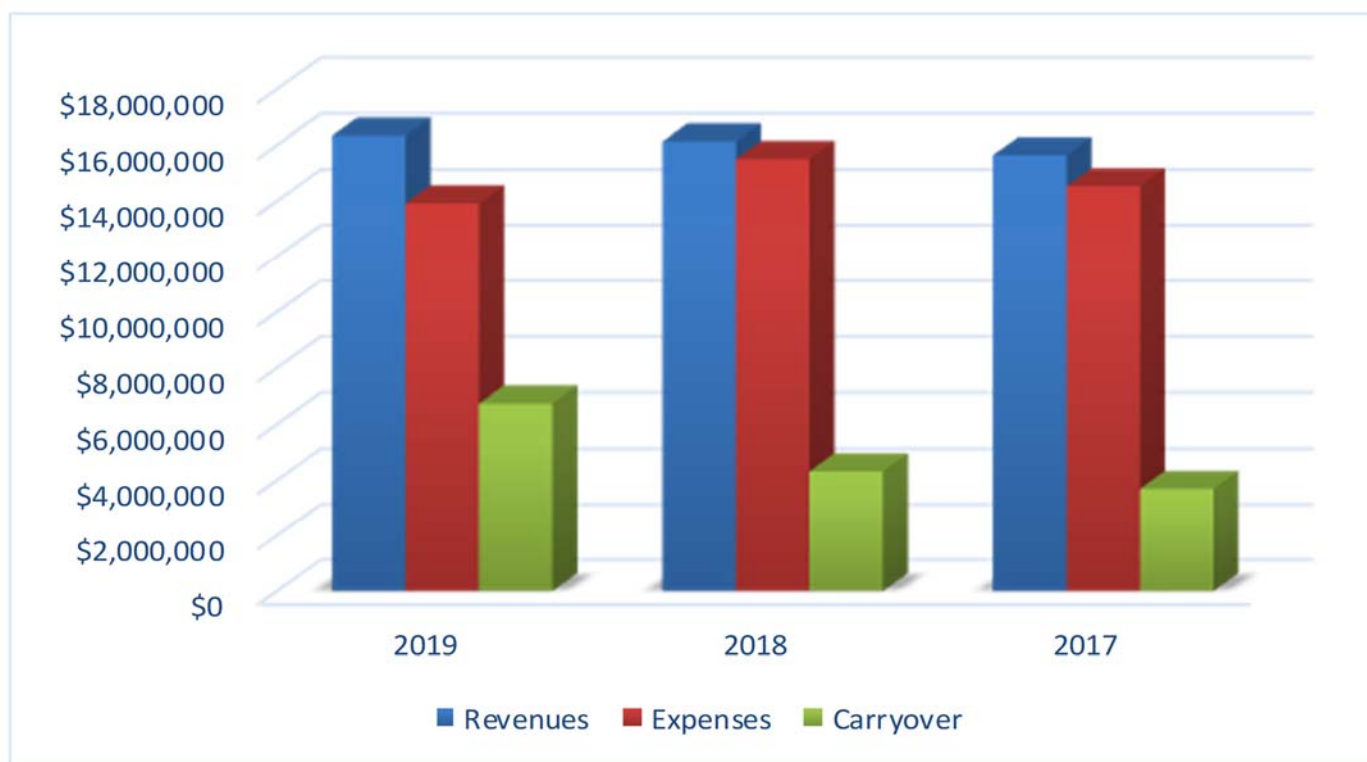


FINANCIAL OVERVIEW

In 2019, 92 partner agencies including individual providers, provided waiver services and supports to 368 waiver recipients. These waiver services included homemaker personal care, transportation to activities that support daily living, respite services, adult day services, adult day transportation, community employment support, adapted equipment, environmental modifications, and more. The total cost for these services was \$18,136,100.39. An individual can receive waiver services from more than one provider and these agencies and providers provided multiple services to waiver recipients.

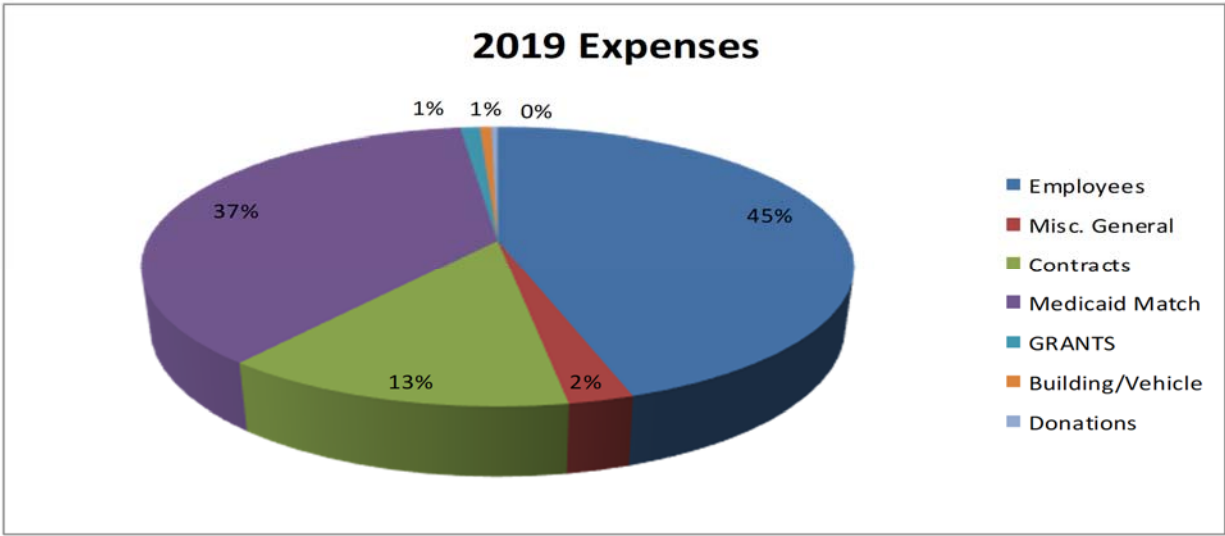
Approximately 60 percent of the waiver service cost is paid by the federal government through Medicaid. The other 40 percent comes from a combination of state and local funds. The providers receive 100 percent of the waiver cost and WCBDD is invoiced by the Ohio Department of Developmental Disabilities or their portion of the 40 percent match. Of the 368 Waivers, 190 were IO Waivers, 164 were LI Waivers and 14 were Self Waivers.

The Wayne County Board programs are funded through a variety of sources with the main revenue coming from tax dollars. The second source is Medicaid reimbursements. The Wayne County Board is continuously looking for ways to use these revenues in a responsible and efficient manner. The following graphs summarize the revenues, expenditures and use of the year to year carryover that fund services.

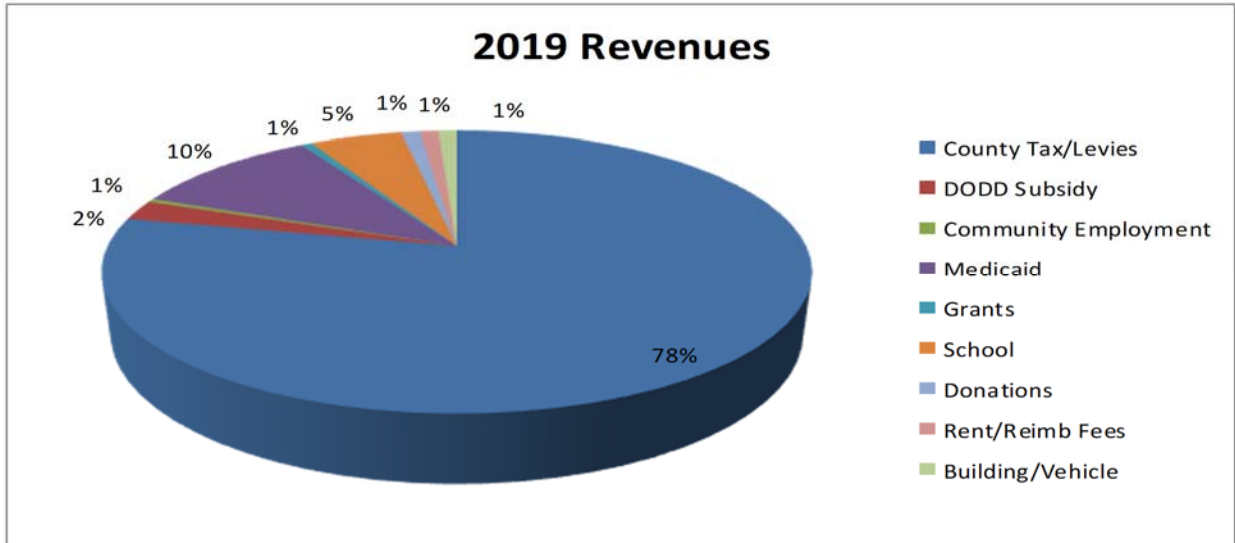


	2019	2018	2017
Revenue	\$16,336,216	\$16,131,840	\$15,644,555
Expenses	\$13,919,814	\$15,508,368	\$14,529,630
Carryover	\$6,736,394	\$4,319,992	\$3,696,520

**Includes transfers between accounts*



	2019 EXPENSES	2018 EXPENSES	2017 EXPENSES
<i>Employees</i>	\$4,504,848	\$4,448,711	\$4,919,553
<i>Misc. General</i>	\$250,909	\$660,973	\$293,783
<i>Contracts</i>	\$1,355,864	\$1,787,632	\$1,240,370
<i>Medicaid Match</i>	\$3,729,638	\$3,940,598	\$3,764,285
<i>Grants</i>	\$105,576	\$79,974	\$105,771
<i>Building/Vehicle</i>	\$63,394	\$239,482	\$55,600
<i>Donations</i>	\$34,113	\$19,240	\$11,586



**Does not include transfers between accounts*

	2019 REVENUES	2018 REVENUES	2017 REVENUES
<i>County Tax/Levies</i>	\$10,172,667	\$9,636,738	\$9,631,169
<i>DODD Subsidy</i>	\$298,013	\$496,036	\$502,906
<i>Community Employment</i>	\$51,615	\$57,935	\$7,261
<i>Medicaid</i>	\$1,346,200	\$698,545	\$705,076
<i>Grants</i>	\$75,619	\$100,287	\$117,144
<i>School</i>	\$652,063	\$742,399	\$652,115
<i>Donations</i>	\$9,138	\$37,352	\$10,897
<i>Rent/Reimbursement</i>	\$208,365	\$267,374	\$181,787
<i>Building/Vehicle</i>	\$306,962	\$15,201	\$30,524

2019 PARTNERS OF THE WAYNE COUNTY BOARD OF DEVELOPMENTAL DISABILITIES

1st Place” Home and Day Services
A.B.L.E. Inc.
Access Ability, Inc.
Adaptive Sports Programs of Ohio
Advocacy & Protective Services, Inc.
Altimate Care
Always Best Care
Andrus & Andrus Adult Care Agency
Angels Care Home Health
Array, Ltd.
Hannah Bucy
Don Bashaw
Diane Beery
Tonja Blair
Blick Clinic
Cambridge Home Health
Canterbury Management Group LLC
Caregiver Homes of Ohio, Inc.
Caring Haven
Catholic Charities
Community Health Network LTD
Consumer Support Services, Inc.
Counseling Center of Wayne/Holmes
Covenant Contract Services
D&D Transportation
Doerschuck’s Bath and Kitchen Show Place
Donna Bunner
Doyle Medical, LLC
Easter Seals NE Ohio
Echoing Hills Facility
Edgell Foster Home
Elite DSS, Inc.
Ellis Michael HCS
Felicity Howton
Stacey Graham Home
Wanda Graham Home
Growing Wings Adult Services LLC
Hall of Fame Residential Services
Helping Angels of Ohio
Holmes Home
Holmes Day Program
Horizons, Inc.
Hughes Family Home
Independent Pathways
Intervention for Peace
Richard Jenkins
Jentes Home
Darin Julien
Leaders Moving and Storage Company
Margaret Logan
Mary Mast
Life Bridges Services
Lori Maxwell
M.C. Mobility
Jackie and Terry McConahay,
Meals on Wheels Stark - Wayne
Midwest Health Services, Inc.
Midwest Innovations, LLC
Myron Miller
Miller’s Sales & Rental
Morning Sun Financial
Motion Mobility & Design
New Dawn Rising Agency
Nick Amster, Inc.
Oak Hill Dual Diagnosis
Opportunities for Ohioans with Disabilities
Open Arms With Love
Outland International
Outreach Community Living Services, Inc.
Payee Support Services
Personalized Care Providers, LLC
Precious Angel Transportation
PurrFoods LLC dba Mom’s Meals
REM Ohio, Inc.
ResCare
Margaret Rice
Charleen Riffle
Sand Run Supports
Sara Anderson
Self Reliance Inc.
Shaw and Ott Medical
Shepherds Hand
Siffrin, Inc.
Sisters Who Care, LLC
Society for Handicapped Citizens
Starcher Family Home
Iris Stark
Stark Adult Foster Home
Stateline Medical Equipment, Inc.
Statewide Transportation
Susan Jackson
United Disability Services, Inc.
Lisa Volpe
WMK Equity Holdings, LLC
W. William Schmidt & Associates, Inc.
Wayne Health Services
Whitehouse Behavioral Health
Windfall Industries
Wooster Transit
X-Excel Day Program
Robin Yost
Janet Young