



2016 ANNUAL REPORT

*Wayne County Board of Developmental
Disabilities 2016 Highlights*

Wayne County Board of Developmental Disabilities

2016 Highlights

Early Intervention

Early Intervention provides family centered services to children from birth to age three. Focusing on meeting developmental milestones, individual based programs are developed with the strengths and needs of each family in mind. The program provides for an Early Intervention Specialist, and Physical, Speech and Occupational Therapies. Currently housed with offices at the Ida Sue School, intervention services are provided in their natural environment (home, day care, library) to address concerns as identified by the family and evaluation team. Therapists are selected as a primary service provider offering coaching for parents/caregivers during activity based routines year round in cooperation with Help Me Grow.

Pre-School

The administration of the pre-school program is provided by the Tri-County Education Service Center, in collaboration with and support from the Wayne County Board of Developmental Disabilities. Sixteen (16) children with developmental disabilities, ages 3-5 are in classrooms with children who are typical in their development, working on skills to prepare them for Kindergarten.

Ida Sue School

The Ida Sue School, for those students who are ages 6 to 21, is staffed by instructors and aides who offer specialized instruction in academics, communication, self-care skills, environmental and community skills, fine arts, physical development, and vocational skills. Specialists work together with the classroom staff to provide appropriate activities for the students in the areas of PT, OT, Speech, and adapted Physical Education. Typical enrollment ranges from 20-24 students. Preparing individuals to successfully enter the world of work is the goal of this program. The program also collaborates with Northwestern Local Schools, Southeast Local Schools and Chippewa Local Schools districts to provide the opportunity for 12 students to attend school with their typical peers



Community Employment

The Community Employment Department continued to yield positive outcomes and ongoing success for the individuals of Wayne County during the 2016 calendar year. The team continued to refine the discovery process while providing high quality integrated opportunities and training to allow future workers more options and choices along their “path” to employment.

- The number of individuals employed in an integrated setting increased by 10% in the year 2016 while losing only one position from the previous years. These positions range from part time to full time and cover a variety of different opportunities.
- The vocational/transition class (VTEC) began collaborations with two local providers to assist with provider development and identify transition plans for all community individuals. The program continues to assist individuals with a discovery process to assist them in identifying the outcomes that they desire and how to help them get there. VTEC has also seen an increase in community based assessment opportunities now working with 16 community partners.
- The Employment first partnership with Opportunities for Ohioans with Disabilities continues to yield positive success with eight new individuals employed.



Transition continues to be a major focus of the Wayne County Board of DD and the Community Department has been able to be part of, and assist with, many school age individuals starting at the age of 14.

- Member of State Support Team 9 Council and partner with their regional trainings.
- The department attended over 120 IEP meetings to assist schools and families identify pathways of transition and local resources.
- The department did presentations for four local school districts for families and students about transition services within Wayne County.
- 5 Individuals received community based assessments while in school and 3 students found part time employment.
- Successful transition of 18 individuals to employment or a training program for possible integrated opportunities.

Self Advocacy

The self advocacy group, or Project Understanding, continues to grow and build a strong base for supporting individuals in Wayne County. With the continued support from the WCBDD and local providers the group has held awareness outings, fundraisers and donated to the needy over the holiday season. They are excited to attend new trainings during the year as well as reaching out and advocating for all those with disabilities in Wayne County.

Adult Services

The Wayne County Board of Developmental Disabilities discontinued direct services to the Adult Day Support and Vocational Habilitation programs at the end of 2014.

Service Coordination

The Service and Support Administration (SSA) department of the Wayne County Board of Developmental Disabilities strives to provide supports to each individual and family to achieve a positive quality of life through use of person-centered life planning processes that uphold the wishes, desires and dreams of each individual for their life. The service coordination staff determine eligibility for program services, assist the individual and family to establish goals for life growth, provide advocacy supports, assure freedom of choice of provider services and protect the health and safety of each individual served.

The Wayne County Board of DD serves over 700 individuals and families affected by developmental disabilities each year with the help and assistance of the Service Coordination Unit where opportunities for ongoing growth and the fulfillment of life goals are carried forward. The programs actively serving our individuals include early intervention services, school age services, community employment and transition services and the service and support administration and waiver services. The Wayne County Board of DD continues to grow through services and supports to our community and the individuals who live, work and play within it.

Transportation

The Wayne County Board of DD Transportation Department is located at 1000 West Liberty Street in Wooster. Throughout 2016, the Board provided transportation services for students attending the Ida Sue School as well as the TCESC operated Ida Sue Pre-school Classrooms. Through provider development efforts and the Free Choice of Provider process, the County Board continued to assist individuals in finding and selecting alternative transportation providers to meet their mobility needs. As a result of this process, the direct provision of Adult Transportation Services was discontinued by the County Board in July 2016. However, our roles continued in the areas of provider development, support and training as well as the local funding administrative oversight for these services throughout 2016.

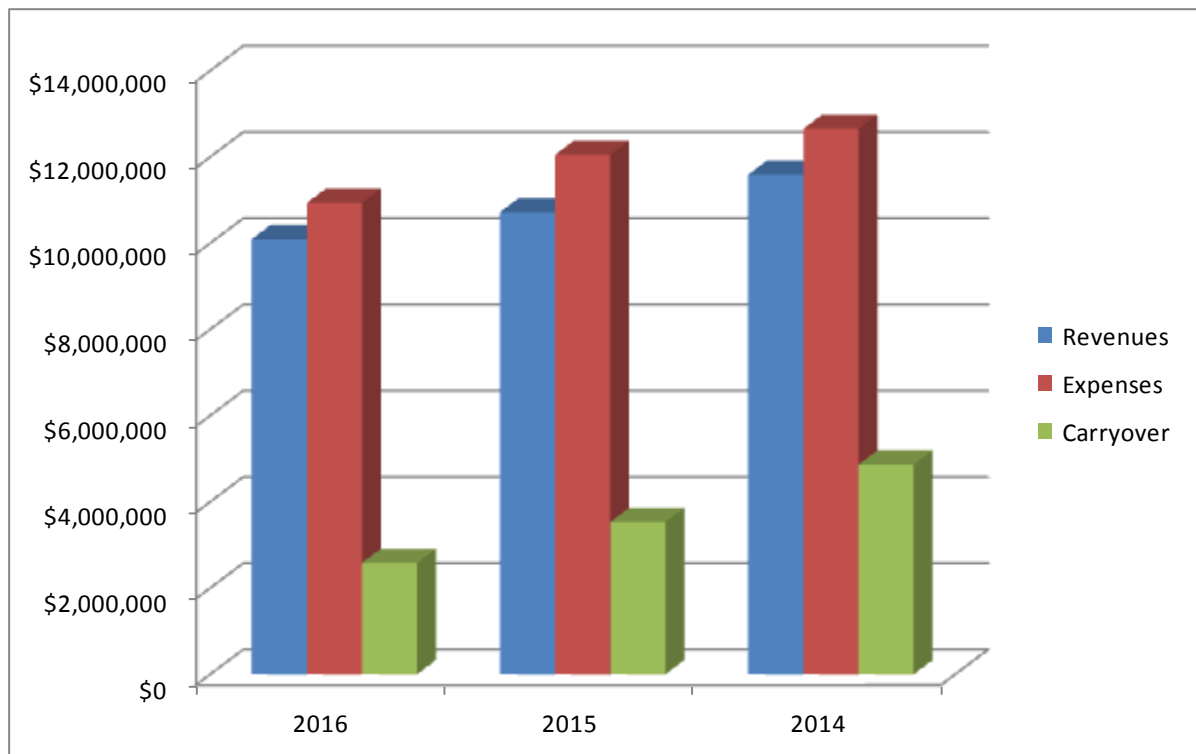


FINANCIAL OVERVIEW

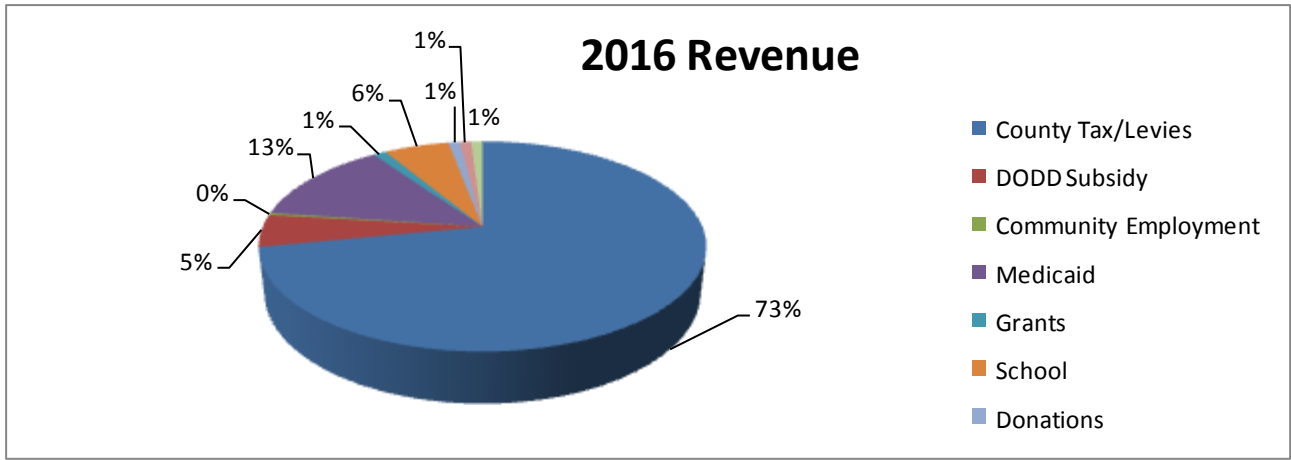
In 2016, 40 agencies, including the WCBDD, and 19 individual providers provided waiver services and supports to 363 waiver recipients. These waiver services include homemaker personal care, transportation to activities that support daily living, respite services, adult day services, adult day transportation, community employment support, adapted equipment, environmental modifications, and more. The total cost for these services was \$10,873,449. An individual does receive waiver services from more than one provider, and these 59 providers provide multiple services to waiver recipients.

Approximately 60 % of the waiver service cost is paid by the federal government through Medicaid, the other 40% is from a combination of state and local funds. The WCBDD, when it bills for waiver services receives the 60 % of the waiver cost, all other providers receive 100% of the waiver cost and WCBDD is invoiced by the state of Ohio DODD for their portion of the 40% match.

The Wayne County Board programs are funded through a variety of sources, with the main revenue coming from tax dollars. The second source is that of Medicaid reimbursements. The Wayne County Board is continuously looking for ways to use these revenues in a responsible and efficient manner. The graphs following summarize the revenues, expenditures and use of the year to year carryover that funds services.



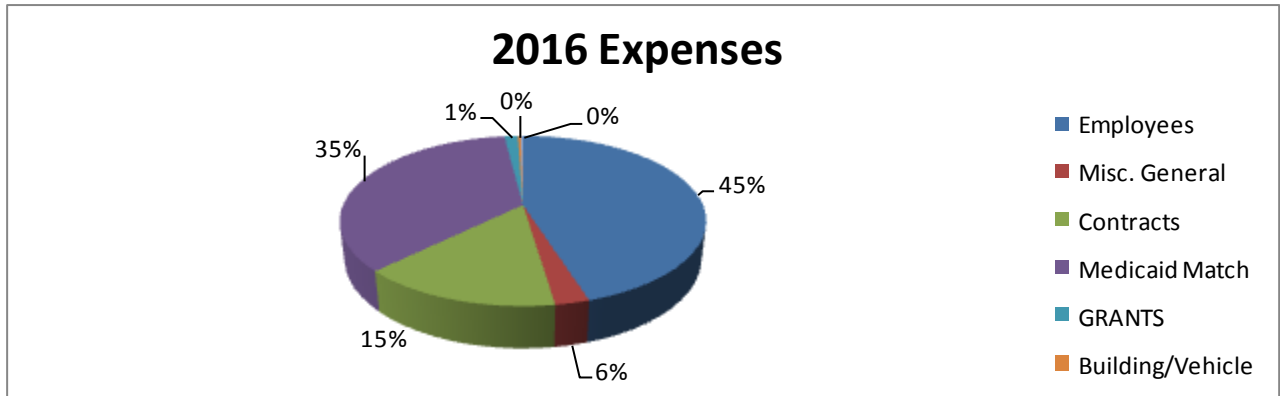
	2016	2015	2014
Revenues	\$10,090,843	\$10,717,741	\$11,590,218
Expenses	\$10,932,530	\$12,050,390	\$12,653,833
Carryover	\$2,581,596	\$3,529,838	\$4,862,487



	2016 REVENUES	2015 REVENUES	2014 REVENUES
County Tax/Levies	\$7,345,055	\$7,390,576	\$7,389,991
DODD Subsidy	\$509,729	\$542,029	\$580,798
Community Employment	\$34,122	\$57,581	\$8,987
Medicaid	\$1,333,504	\$1,124,622	\$1,829,994
Grants	\$114,395	\$111,534	\$96,643
School	\$574,718	\$1,460,305	\$1,355,787
Donations	\$25,194	\$25,724	\$91,116
Residential Fees*	\$83,792	\$5,370	\$16,572
Capital Improvement*	\$70,335	\$0	\$220,330

**Change in category to Rent/ Reimbursement of fees as the county no longer collects residential fees*

**Capital improvement changed to Building /Vehicle related revenue*



	2016 EXPENSES	2015 EXPENSES	2014 EXPENSES
Employees	\$4,932,323	\$5,768,282	\$6,299,897
Misc. General	\$278,267	\$488,359	\$700,540
Contracts	\$1,637,837	\$1,861,699	\$1,845,930
Medicaid Match	\$3,869,137	\$3,742,697	\$3,482,547
GRANTS	\$155,051	\$117,413	\$103,612
Capital Improvement*	\$34,583	\$47,197	\$113,215
Donations	\$25,332	\$24,743	\$108,092

**Capital Improvement changed to Building/Vehicle*

**2016 PARTNERS OF THE
WAYNE COUNTY BOARD OF
DEVELOPMENTAL DISABILITIES**

A.B.L.E., Inc.	Margaret Logan
Access Ability, Inc.	Mary Mast
Advocacy & Protective Services, Inc.	Lori Maxwell
Altimate Care	Jackie McConahay
Angels Care Home Health	Midwest Health Services, Inc.
ARRAY, LTD.	Morning Star Financial
Don Bashaw	Motion/Mobility & Design
Diane Beery	New Dawn Rising, Agency
Tonja Blair	Nick Amster, Inc.
Sonja Brunk	Opportunities for Ohioans with Disabilities
Cambridge Home Health	Open Arms With Love
Caring Haven	Outreach Community
Catholic Charities	Living Services, Inc.
Community Health Network LTD	Payee Support Services
Consumer Support Serv., Inc.	REM Ohio, Inc.
Counseling Center of Wayne/Holmes	ResCare
Brenda Custer	Rice Margaret
D&D Transportation	Sand Run Supports
Easter Seals NE Ohio	Self Reliance Inc.
Edgell Home	Shepherds Hand
Michael Ellis HCS	Siffrin
Stacey Graham Home	Society for Handicapped Citizens
Wanda Graham Home	Starcher Family Home
Helping Angels of Ohio	Stark Adult Foster Home
Holmes Day Program	Statewide Transportation
Hope Homes, Inc.	Wayne Health/Aultman Hospital
Horizons, Inc.	Whitehouse Behavioral Health
Hughes Family Home	Windfall Industries
Independent Pathways	Wooster Hospitality Transit
Intervention for Peace	X-Excel Day Program
Jentes Home	Robin Yost
Darin Julien	Janet Young
Leaders Moving and Storage Co.	